

TSPH

JEE • NEET • MHT-CET

NEET 2023 QUESTION PAPER BIOLOGY (ZOOLOGY)

TSPH

JEE • NEET • MHT-CET

The Science Private's Hub

**XI-XII SCIENCE
JEE (Mains & Adv.) | NEET | MHT-CET**



www.tsph.in

F6

NEET 2023

Biology (Zoology)

Section – A (Compulsory)

151. Given below are two statements:

Statement I: A protein is imagined as a line, the left end represented by first amino acid (C-terminal) and the right end represented by last amino acid (N-terminal)

Statement II: Adult human haemoglobin consists of 4 subunits (two subunits of α type and two subunits of β type.) In the light of the above statements.

Choose the correct answer from the options given below:

- (1) Both Statement I and Statement II are false.
- (2) Statement I is true but Statement II is false.
- (3) Statement I is false but Statement II is true.
- (4) Both Statement I and Statement II are true.

152. Radial symmetry is NOT found in adults of phylum

- (1) Hemichordata
- (2) Coelenterata
- (3) Echinodermata
- (4) Ctenophora

153. Which of the following statements are correct regarding female reproductive cycle?

- A. In non-primate mammals cyclical changes during reproduction are called oestrus cycle.
- B. First menstrual cycle begins at puberty and is called menopause.

C. Lack of menstruation may be indicative of pregnancy.

D. Cyclic menstruation extends between menarche and menopause.

Choose the most appropriate answer from the options given below:

- (1) A and B only
- (2) A, B and C only
- (3) A, C and D only
- (4) A and D only

154. Given below are statements: one is labelled as Assertion A and the other is labelled as Reason R.

Assertion A: Nephrons are of two types: Cortical & Juxta medullary, based on their relative position in cortex and medulla.

Reason R: Juxta medullary nephrons have short loop of Henle whereas, cortical nephrons have longer loop of Henle.

In the light of the above statements.

Choose the correct answer from the options given below:

- (1) Both A and R are true but R is NOT the correct explanation of A.
- (2) A is true but R is false.
- (3) A is false but R is true.
- (4) Both A and R are true and R is the correct explanation of A.

155. Match List I with List II with respect to human eye.

| | List I | | List II |
|----|---------------|------|---|
| A. | Fovea | I. | Visible coloured portion of eye that regulates diameter of pupil. |
| B. | Iris | II. | External layer of eye formed of dense connective tissue |
| C. | Blind spot | III. | Point of greatest visual lacuity or resolution. |
| D. | Sclera | IV. | Point where optic nerve leaves the eyeball and photoreceptor cells are absent |

Choose the correct answer from the options given below:

- (1) A-IV, B-III, C-II, D-I
- (2) A-I, B-IV, C-III, D-II
- (3) A-II, B-I, C-III, D-IV
- (4) A-III, B-I, C-IV, D-II

156. Which of the following are NOT considered as the part of endomembrane system?

- A. Mitochondria
- B. Endoplasmic Reticulum
- C. Chloroplasts
- D. Golgi complex
- E. Peroxisomes

Choose the most appropriate answer from the options given below:

- (1) A, C and E only
- (2) A and D only
- (3) A, D and E only
- (4) B and D only

157. Broad palm with single palm crease is visible in a person suffering from

- (1) Turner's syndrome
- (2) Klinefelter's syndrome
- (3) Thalassaemia
- (4) Down's syndrome

158. Match List I with List II.

| | List I | | List II |
|----|---------------|------|------------------------------|
| A. | P-wave | I. | Beginning of systole |
| B. | Q-wave | II. | Repolarisation of ventricles |
| C. | QRS complex | III. | Depolarisation of atria |
| D. | T-wave | IV. | Depolarisation of ventricles |

Choose the correct answer from the options given below:

- (1) A-IV, B-III, C-II, D-I
- (2) A-II, B-IV, C-I, D-III
- (3) A-I, B-II, C-III, D-IV
- (4) A-III, B-I, C-IV, D-II

159. Which one of the following common sexually transmitted diseases is completely curable when detected early and treated properly?

- (1) Gonorrhoea
- (2) Hepatitis-B
- (3) HIV Infection
- (4) Genital herpes

160. Match List I with List II.

| | List I (Cells) | | List II (Secretion) |
|----|---------------------------------|------|--|
| A. | Peptic cells | I. | Mucus |
| B. | Goblet cells | II. | Bile juice |
| C. | Oxyntic cells | III. | Proenzyme pepsinogen |
| D. | Hepatic cells | IV. | HCl and intrinsic factor for absorption of vitamin B ₁₂ |

Choose the correct answer from the options given below:

- (1) A-II, B-I, C-III, D-IV
- (2) A-III, B-L. C-IV, D-II
- (3) A-II, B-IV, C-I, D-III
- (4) A-IV, B-III, C-II, D-I

161. Given below are two statements: one is labelled as Assertion A and the other is labelled as Reason R.

Assertion A: Endometrium is necessary for implantation of blastocyst.

Reason R: In the absence of fertilization, the corpus luteum degenerates that causes disintegration of endometrium.

In the light of the above statements, choose the correct answer from the options given below:

- (1) Both A and R are true but R is NOT the correct explanation of A.
- (2) A is true but R is false.
- (3) A is false but R is true.
- (4) Both A and R are true and R is the correct explanation of A.

162. Which of the following is not a cloning vector?

- (1) YAC
- (2) pBR322
- (3) Probe
- (4) BAC

163. Match List I with List II.

| | List I | | List II |
|----|-------------|------|---------------------|
| A. | Taenia | I. | Nephridia |
| B. | Paramoecium | II. | Contractile vacuole |
| C. | Periplaneta | III. | Flame cells |
| D. | Pheretima | IV. | Urecose gland |

Choose the correct answer from the options give below:

- (1) A-I, B-II, C-IV, D-III
- (2) A-III, B-II, C-IV, D-I
- (3) A-II, B-I, C-IV, D-III
- (4) A-I, B-II, C-III. D-IV

164. Given below are two statements:

Statement I: Ligaments are dense irregular tissue.

Statement II: Cartilage is dense regular tissue.

In the light of the above statements, choose the correct answer from the options given below:

- (1) Both Statement I and Statement II are false.
- (2) Statement I is true but Statement II is false.
- (3) Statement I is false but Statement II is true.
- (4) Both Statement I and Statement II are true.

165. Which of the following functions is carried out by cytoskeleton in a cell?

- (1) Protein synthesis
- (2) Motility
- (3) Transportation
- (4) Nuclear division

166. Match List I with List II. List I

| | List I | | List II |
|----|----------|------|------------------------|
| A. | Gene 'a' | I. | β -galactosidase |
| B. | Gene 'y' | II. | Transacetylase |
| C. | Gene 'l' | III. | Permease |
| D. | Gene 'z' | IV. | Repressor protein |

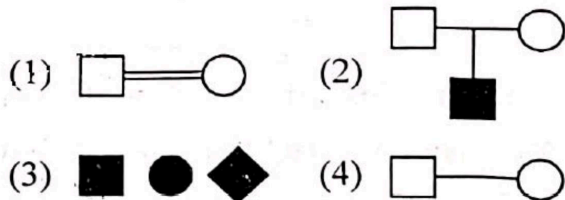
Choose the correct answer from the options given below:

- (1) A-II, B-III, C-IV, D-I
- (2) A-III, B-IV, C-I, D-II
- (3) A-III. B-I, C-IV, D-II
- (4) A-II, B-I, C-IV, D-III

167. Which of the following statements is correct?

- (1) Biomagnification refers to increase in concentration of the toxicant at successive trophic levels.
- (2) Presence of large amount of nutrients in water restricts 'Algal Bloom'
- (3) Algal Bloom decreases fish mortality
- (4) Eutrophication refers to increase in domestic sewage and waste water in lakes.

168. Which one of the following symbols represents mating between relatives in human pedigree analysis?



169. Once the undigested and unabsorbed substances enter the caecum, their backflow is prevented by-

- (1) Ileo- caecal valve
- (2) Castro-oesophageal sphincter
- (3) Pyloric sphincter
- (4) Sphincter of Oddi

170. Which one of the following techniques does not serve the purpose of early diagnosis of a disease for its early treatment?

- (1) Serum and Urine analysis
- (2) Polymerase Chain Reaction (PCR) technique
- (3) Enzyme Linked Immuno-Sorbent Assay (ELISA) technique
- (4) Recombinant DNA Technology

171. Given below are two statements:

Statement I: Low temperature preserves the enzyme in a temporarily inactive state whereas high temperature destroys enzymatic activity because proteins are denatured by heat.

Statement II: When the inhibitor closely resembles the substrate in its molecular structure and inhibits the activity of the enzyme, it is known as competitive inhibitor.

In the light of the above statements, choose the correct answer from the options given below:

- (1) Both Statement I and Statement II are false.
- (2) Statement I is true but Statement II is false.
- (3) Statement I is false but Statement II is true.
- (4) Both Statement I and Statement II are true.

172. Match List I with List II.

| | List I (Type of Joint) | | List II (Found between) |
|----|---|------|--|
| A. | Cartilaginous Joint | I. | Between flat skull bones |
| B. | Ball and Socket Joint | II. | Between adjacent vertebrae in vertebral column |
| C. | Fibrous Joint | III. | Between carpal and metacarpal of thumb |
| D. | Saddle Joint | IV. | Between Humerus and Pectoral girdle |

Choose the correct answer from the options given below:

- (1) A-II, B-IV, C-I, D-III.
- (2) A-I, B-IV, C-III, D-II
- (3) A-II, B-IV, C-III, D-I
- (4) A-III, B-I, C-II, D-IV

173. Given below are two statements:

Statement I: Vas deferens receives a duct from seminal vesicle and opens into urethra as the ejaculatory duct.

Statement II: The cavity of the cervix is called cervical canal which along with vagina forms birth canal.

In the light of the above statements, choose the correct answer from the options given below:

- (1) Both Statement I and Statement II are false.
- (2) Statement I is correct but Statement II is false.
- (3) Statement I incorrect but Statement II is true
- (4) Both Statement I and Statement II are true.

174. In which blood corpuscles, the HIV undergoes replication and produces progeny viruses?

- (1) B-lymphocytes
- (2) Basophils
- (3) Eosinophils
- (4) T_H cells

175. Match List I with List II.

| | List I | | List II |
|----|-----------|------|--------------------------------------|
| A. | Heroin | I. | Effect on cardiovascular system |
| B. | Marijuana | II. | Slow down body function |
| C. | Cocaine | III. | Painkiller |
| D. | Morphine | IV. | Interfere with transport of dopamine |

Choose the correct answer from the options given below:

- (1) A-I, B-II, C-III, D-IV
- (2) A-IV, B-III, C-II, D-I
- (3) A-III, B-IV, C-I, D-II
- (4) A-II, B-I, C-IV, D-III

176. Vital capacity of lung is _____

- (1) IRV + ERV + TV + RV
- (2) IRV + ERV + TV - RV
- (3) IRV + ERV + TV
- (4) IRV + ERV

177. Select the correct group/set of Australian Marsupials exhibiting adaptive radiation.

- (1) Numbat, Spotted cuscus, Flying phalanger
- (2) Mole, Flying squirrel, Tasmanian tiger cat
- (3) Lemur, Anteater, Wolf
- (4) Tasmanian wolf, Bobcat, Marsupial mole

178. Match List I with List II. List I

| | List I | | List II |
|----|--------|------|---------------|
| A. | CCK | I. | Kidney |
| B. | GIP | II. | Heart |
| C. | ANF | III. | Gastric gland |
| D. | ADH | IV. | Pancreas |

Choose the correct answer from the options given below:

- (1) A-III, B-II, C-IV, D-I
- (2) A-II, B-IV, C-I, D-III
- (3) A-IV, B-II, C-III, D-I
- (4) A-IV, B-III, C-II, D-I

179. Given below are two statements: one is labelled as Assertion A and the other is labelled as Reason R.

Assertion A: Amniocentesis for sex determination is one of the strategies of Reproductive and Child Health Care Programme.

Reason R: Ban on amniocentesis checks increasing menace of female foeticide.

In the light of the above statements, choose the correct answer from the options given below:

- (1) Both **A** and **R** are true and **R** is NOT the correct explanation of **A**.
- (2) **A** is true but **R** is false.
- (3) **A** is false but **R** is true.
- (4) Both **A** and **R** are true and **R** is the correct explanation of **A**.

180. Given below are two statements:

Statement I: RNA mutates at a faster rate.

Statement II: Viruses having RNA genome and shorter life span mutate and evolve faster.

In the light of the above statements, choose the correct answer from the options given below:

- (1) Both Statement I and Statement II are false.
- (2) Statement I is true but Statement II is false.
- (3) Statement I false but Statement II is true.
- (4) Both Statement I and Statement II are true.

181. Match List I with List II.

| | List I | | List II |
|----|--------------------|------|-----------------|
| A. | Vasectomy | I. | Oral method |
| B. | Coitus interruptus | II. | Barrier method |
| C. | Cervical caps | III. | Surgical method |
| D. | Saheli | IV. | Natural method |

Choose the correct answer from the options given below:

- (1) A-III, B-IV, C-II, D-I
- (2) A-II, B-III, C-I, D-IV
- (3) A-IV, B-II, C-I, D-III
- (4) A-III, B-I, C-IV, D-II

182. Given below are two statements:

Statement I: Electrostatic precipitator is most widely used in thermal power plant.

Statement II: Electrostatic precipitator in thermal power plant removes ionising radiations.

In the light of the above statements, choose the most appropriate answer from the options given below:

- (1) Both Statement I and Statement II are incorrect.
- (2) Statement I is correct but Statement II is incorrect.
- (3) Statement I incorrect but Statement II is correct.
- (4) Both Statement I and Statement II are correct.

183. Given below are two statements:

Statement I: In prokaryotes, the positively charged DNA is held with some negatively charged proteins in a region called nucleoid.

Statement II: In eukaryotes, the negatively charged DNA is wrapped around the positively charged histone octamer to form nucleosome.

In the light of the above statements, choose the correct answer from the options given below:

- (1) Both Statement I and Statement II are false.
- (2) Statement I is correct but Statement II is false.
- (3) Statement I incorrect but Statement II is true.
- (4) Both Statement I and Statement II are true.

184. Match List I with List II.

| | List I | | List II |
|----|------------|------|------------------------|
| A. | Ringworm | I. | Haemophilus influenzae |
| B. | Filariasis | II. | Trichophyton |
| C. | Malaria | III. | Wuchereria bancrofti |
| D. | Pneumonia | IV. | Plasmodium vivax |

Choose the correct answer from the options given below:

- (1) A-II, B-III, C-I, D-IV
- (2) A-III, B-II, C-I, D-IV
- (3) A-III, B-II, C-IV, D-I
- (4) A-II, B-III, C-IV, D-I

185. Match List I with List II.

| | List I (Interacting species) | | List II (Name of Interaction) |
|----|---|------|----------------------------------|
| A. | A Leopard and a Lion in a forest/ grassland | I. | Competition |
| B. | A Cuckoo laying egg in a Crow's nest | II. | Brood parasitism |
| C. | Fungi and root of a higher plant in Mycorrhizae | III. | Mutualism |
| D. | A cattle egret and a Cattle in a field | IV. | Commensalism |

Choose the correct answer from the options given below:

- (1) A-I, B-II, C-IV, D-III
- (2) A-III, B-IV, C-I, D-II
- (3) A-II, B-III, C-I, D-IV
- (4) A-I, B-II, C-III, D-IV

Section-B (Attempt ANY 10)

186. Which of the following statements are correct ?

- A. Basophils are most abundant cells of the total WBCS
- B. Basophils secrete histamine, serotonin and heparin
- C. Basophils are involved in inflammatory response
- D. Basophils have kidney shaped nucleus
- E. Basophils are agranulocytes

Choose the correct answer from the options given below:

- (1) C and E only
- (2) B and C only
- (3) A and B. only
- (4) D and E only

187. Match List I with List II.

| | List I | | List II |
|----|-----------------------------|------|-------------------------------|
| A. | Mast cells | I. | Ciliated epithelium |
| B. | Inner surface of bronchiole | II. | Areolar connective tissue |
| C. | Blood | III. | Cuboidal epithelium |
| D. | Tubular parts of nephron | IV. | specialised connective tissue |

Choose the correct answer from the options give below:

- (1) A-II, B-III, C-I, D-IV
- (2) A-II, B-I, C-IV, D-III
- (3) A-III, B-IV, C-II, D-I
- (4) A-I, B-II, C-IV, D-III

188. Select the correct statements.

- A. Tetrad formation is seen during Leptotene.
- B. During Anaphase, the centromeres split and chromatids separate.
- C. Terminalization takes place during Pachytene.
- D. Nucleolus, Golgi complex and ER are reformed during Telophase.
- E. Crossing over takes place between sister chromatids of homologous chromosome.

Choose the correct answer from the options given below:

- (1) B and D only
- (2) A, C and E only
- (3) B and E only
- (4) A and C only

189. In cockroach, excretion is brought about by-

- A. Phallic gland
- B. Ureose gland
- C. Nephrocytes.
- D. Fat body
- E. Collateral glands

Choose the correct answer from the options given below:

- (1) A, B and E only
- (2) B, C and D only
- (3) B and D only
- (4) A and E only

190. Given below are two statements:

Statement I: During G_0 phase of cell cycle, the cell is metabolically inactive.

Statement II: The centrosome undergoes duplication during S phase of interphase.

In the light of the above statements, Choose the **most appropriate** answer from the options given below:

- (1) Both Statement I and Statement II are incorrect.

- (2) Statement I is correct but Statement II is incorrect.
- (3) Statement I is incorrect but Statement II is correct.
- (4) Both Statement I and Statement II are correct

191. Select the correct statements with reference to chordates.

- A. Presence of a mid-dorsal, solid and double nerve cord.
- B. Presence of closed circulatory system
- C. Presence of paired pharyngeal gillslits.
- D. Presence of dorsal heart
- E. Triploblastic pseudocoelomate animals.

Choose the correct answer from the options given below:

- (1) B and C only
- (2) B, D and E only
- (3) C, D and E only
- (4) A, C and D only

192. Match List I with List II.

| | List I | | List II |
|----|-----------------------|------|--|
| A. | Logistic growth | I. | Unlimited resource availability condition |
| B. | Exponential growth | II. | Limited resource availability condition |
| C. | Expanding age pyramid | III. | The percent individuals of pre-reproductive age is largest followed by reproductive and post reproductive age groups |
| D. | Stable age pyramid | IV. | The percent individuals of pre-reproductive and reproductive age group are same |

Choose the correct answer from the options given below:

- (1) A-II, B-III, C-I, D-IV
- (2) A-II, B-IV, C-I, D-III
- (3) A-II, B-IV, C-III, D-I
- (4) A-II, B-I, C-III, D-IV

193. Which one of the following is the sequence on corresponding coding strand, if the sequence on mRNA formed is as follows

5' AUCGAUCGAUCGAUCG
AUCG AUCG 3'?

- (1) 3' UAGCUAGCUAGCUAGCUA
GCUAGCUAGC 5'
- (2) 5' ATCGATCGATCGATCGATCG
ATCGATCG 3'
- (3) 3' ATCGATCGATCGATCGATCG
ATCGATCG 5'
- (4) 5' UAGCUAGCUAGCUAGCUA
GCUAGC UAGC 3'

194. Which of the following is characteristic feature of cockroach regarding sexual dimorphism?

- (1) Presence of anal styles
- (2) Presence of sclerites
- (3) Presence of anal cerci
- (4) Dark brown body colour and anal cerci

195. Which of the following statements are correct regarding skeletal muscle?

- A. Muscle bundles are held together by collagenous connective tissue layer called fascicle.
- B. Sarcoplasmic reticulum of muscle fibre is a store house of calcium ions.
- C. Striated appearance of skeletal muscle fibre is due to distribution pattern of actin and myosin proteins.
- D. M line is considered as functional unit of contraction called sarcomere.

Choose the most appropriate answer from the options given below:

- (1) B and C only
- (2) A, C and D only
- (3) C and D only
- (4) A, B and C only

196. The unique mammalian characteristics are

- (1) hairs, pinna and mammary glands
- (2) hairs, pinna and indirect development
- (3) pinna, monocondylic skull and mammary glands
- (4) hairs, tympanic membrane and mammary glands

197. Which one of the following is NOT an advantage of inbreeding?

- (1) It exposes harmful recessive genes that are eliminated by selection.
- (2) Elimination of less desirable genes and accumulation of superior genes takes place due to it.
- (3) It decreases the productivity of inbred population, after continuous inbreeding.
- (4) It decreases homozygosity.

198. The parts of human brain that helps in regulation of sexual behaviour, expression of excitement, pleasure, rage, fear etc. are :

- (1) Corpora quadrigemina & hippocampus
- (2) Brain stem & epithalamus
- (3) Corpus callosum and thalamus
- (4) Limbic system & hypothalamus,

199. Which of the following statements are correct?

- A. An excessive loss of body fluid from the body switches off osmoreceptors.
- B. ADH facilitates water reabsorption to prevent diuresis.
- C. ANF causes vasodilation.
- D. ADH causes increase in blood pressure.
- E. ADH is responsible for decrease in GFR.

Choose the correct answer from the options given below:

- (1) B, C and D only
- (2) A, B and E only
- (3) C, D and E only
- (4) A and B only

200. Which of the following are NOT under the control of thyroid hormone?

- A. Maintenance of water and electrolyte balance
- B. Regulation of basal metabolic rate
- C. Normal rhythm of sleep-wake cycle
- D. Development of immune system
- E. Support the process of R.B.Cs formation

Choose the correct answer from the options given below:

- (1) B and C only
- (2) C and D only
- (3) D and E only
- (4) A and D only

NEET RESULTS 2022

अद्भुत !
असाधारण !!
अतुल्य !!!



NOW @
KEM
MUMBAI

MEHEK BHARUKA

667 /720

STATE RANK 91



NOW @
AIIMS
BATHINDA

LAKSHIT PARIHAR

663 /720

NEET 2022

NAIR
MUMBAI



AAKASH
YADAV
641

NAIR
MUMBAI



RAFEA
SHAIKH
637

COOPER
MUMBAI



SUKANYA
SINGH
617

COOPER
MUMBAI



JAGDISH KUMAR
PATEL
616

IGMC
NAGPUR



PRATHAMESH
KULKARNI
599

GMC
KOLHAPUR



PUNEET
SOLANKI
588

GMC
AMBEJOGAI



REVIN
PATTAR
583

GMC
LATUR



SHREYAS
CHOUDHARY
582

GMC
LATUR



PURVI
THAKAR
581

GMC
JALGAON



KESAR
RATHOD
575

GMC
JALGAON



VAIBHAV
SHUKLA
572

GMC
JALGAON



DEEPIKA
KAPURIA
570

GMC
SATARA



KRISH
AMRELIA
570

KJ
MUMBAI



DIYA
PATEL
547



PIMS
LONI



NEEL
PARMAR
547

KMMC
MATHURA



MANSI
DUBEY
547

SSPMMC
SINHDURG



VINAYAK
DWIVEDI
547

PIMS
LONI



CHAHAL
JAISWAL
547

NKP
NAGPUR



AASTHA
TIWARI
547

SYMBIOSIS
PUNE



RIZA
MENON
547

NYT
KARJAT



DIVYA
SUTHAR
547

SSPMMC
SINHDURG



YASHRAJ
CHAVAN
547

SELECTION RATIO में मुंबई के सर्वश्रेष्ठ में से एक

NEET 2021

अद्भुत !
असाधारण !!
अतुल्य !!!



NOW @
AIIMS
BHOPAL

DARSHIT J.
689 /720
AIR EWS 45

NOW @
AIIMS
BHOPAL



VAIDEHI T.
687 /720

AIR : All India Rank

22 STUDENTS
SCORED ABOVE **500**



NIKITA M.

651

LTMMC, MUMBAI



CHIRAG P.

625

TNMC, MUMBAI



YASH S.

625

GMC, MUMBAI



CHIRAG D.

624

TNMC, MUMBAI



AKSHAT K.

604

GMC, NAGPUR



NIKITA P.

598

IGMC, NAGPUR



KATHA M.

593

GMC, ALIBAUG



AKSHIT P.

584

GMC, KOLHAPUR



SIYA M.

580

GMC, DHULE



ANURADHA S.

579

GMC, AKOLA



SAHER S.

573

GMC, CHANDRAPUR



CHINTAN T.

572

GMC, YAVATMAL



MAHEK B.

570



DEECHA P.

559

GMC, GONDIA

TSPH

IS

TSPH